

www.desenk.com.cn



UNLIMITED LOAD ELEVATOR

DESENK ELEVATOR(CHINA) CO.,LTD



DESENK ELEVATOR(CHINA) CO.,LTD

Headquartered address:No.1888 Xiangyang West Road, Nanxun District, Huzhou City,
Zhejiang Province, China

(TEL) : +86 0572-3039 999 (FAX) : +86 0572-3875 808
(FAX) : 313009 Email: sunjunbo@desenk.com.cn

Global free service hotline **0086-400-8913-598**



Desenk official WeChat



BRAND HISTORY

Founded in the United States in the last century, Desenk Elevator has taken innovative technology as its core since its establishment, constantly improved product quality, and integrated the best global service system into elevator industry, creating a unique brand of high-end elevator.

At present, Desenk Elevator (China) Co., Ltd. inherits the spirit of American Desenk Elevator, integrates global resources and advantages, stands on the stage of new era, and adopts higher standards and concept to provide global customers with extraordinary products and services.

1853

The first elevator safety system was displayed in front of the public in New York, and it opened the curtain of elevator industry development.

1933

The creator of Desenk elevator brand Ade • Johnson participated in the technology research of the global first 6m/s express elevator, which was installed in the Empire State Building in New York, indicating the official uprising of the express elevator in the world.

1949

The creator of Desenk elevator brand Ade • Johnson was invited to lead his group to independently develop and research passenger elevator for several buildings in Shanghai, China.

1955

Ade • Johnson created technology Duration technology research and development work studio (the original Desenk Elevator) in Yorktown of New York, and successfully developed and researched vacuum electric tube mini computer controlling elevator.

1967

The thyristor produced by Duration technology research and develop work studio was applied to elevator drive system. It improved and developed ac variable voltage speed control system, the speed regulation characteristic of ac elevator improved a lot.

1982

Duration comprehensively develops into a modernized professional elevator company concentrating on design, manufacture, sales, installment and service. By dint of its proficient technology and professional service it gradually broadens global brand sales website and officially changes its name into American Desenk Elevator Shareholding Co., Ltd.

2013

American Desenk Elevator Shareholding Co., Ltd. Joins hands with Zhongao Elevator under Xinshen Science and Technology to establish——Desenk Elevator (China) Co., Ltd., which has entered China Nanxun Elevator Industrial Park



ENTERPRISE BRIEF INTRODUCTION

Desenk elevator (China) Ltd is a sino-foreign joint venture specialized in research, development and manufacturing of elevator all over the world, established commonly by Suzhou Zhongao Elevator Ltd and American Desenk Elevator Ltd with an area being 120 mu, and construction area in first phase being 80000 square meters and total investment being 90 million dollar. The company integrates research, design, manufacturing, sales, installation and maintenance with height being 108 meters, experiment tower being 8m/s for speed of elevator and introduced advanced production and examination equipment from America, Germany and Italy. The company has manufacturing ability of annual output being 30,000, which is large scaled enterprise facing to elevator, escalator and solid parking equipment in global market.

The company depends on advantage of joint venture, reaching initiate strategic cooperation alliance with middle and large scaled elevator manufacturing company and elevator parts company with long term manufacturing history in America. At the meantime, it is endowed with exquisite manufacturing technology and rigorous management pattern of European and American countries, producing highly efficient, safe, comfortable brand elevator products with European and American industrial quality with multiple parties of cooperation, close contact and common research and development.

120 acres Covers an area	8000 square meters Construction area
\$90000000 Total investment	8 m/s Elevator speed

American superior products, serving all over the world; Desenk elevator provides for landmark building with top level passenger flow solution in China with international standard and precise marketing positioning, exquisite operation. We will be committed in creating top level Chinese manufacturing base, providing product and service satisfying and exceeding consumers' demands, creating perfect passenger flow.



INTRODUCTION TO ELEVATOR TYPE



1 Passenger elevator

Smart creating of space, provide a variety of choices for building design.

2 Observation elevator

Beautiful scenery comfortable range rover.

5 Escalator

More passengers present deep trust in safety of Desenk escalators in prosperous business centers.

6 Moving walk

Desenk moving walk guarantee the free access of bustling crowds.



3 Freight elevator

Secure and steady the mobile strong box in the building.

4 Bed elevator

Humanized design put ourselves in customers' passageway.

7 Villa elevator

Noble appearance with intelligent kernel.

8 Stretcher elevator

Humanistic concern, life space provide safe and reliable emergency channel for residents.

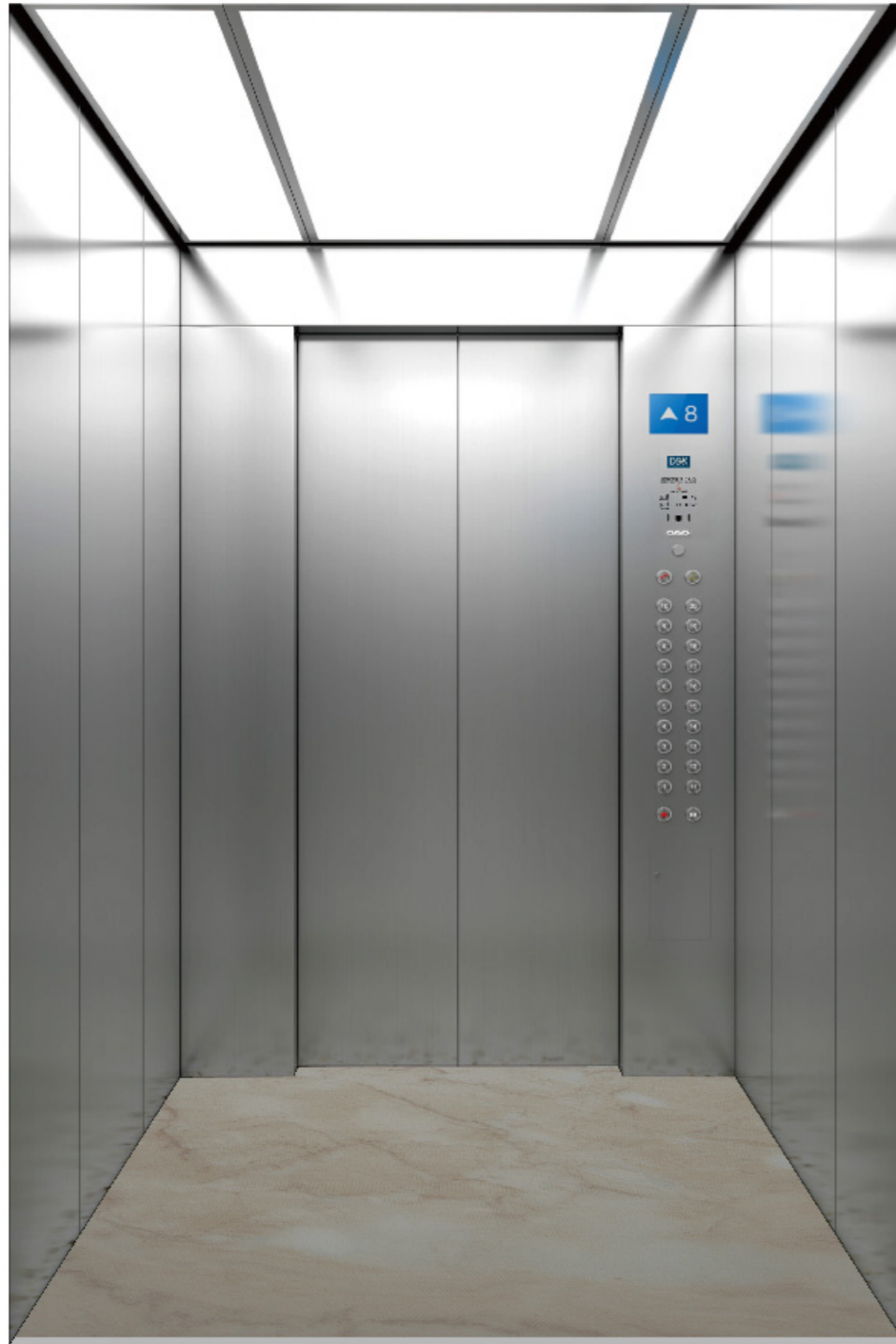


PASSENGER CAR DECORATION

The excellent
performance of
unlimited scenery



Standard car



DSK-K001

Ceiling: Hairline stainless steel, LED light
Car wall : Hairline stainless steel
Front wall: Hairline stainless steel
Wheel: Hairline stainless steel
(Integrated control box)
Car door: Hairline stainless steel
Floor:PVC

DSK-K003

Ceiling: Titanium mirror, LED light
Car wall: Titanium mirror etched (central plate), titanium hairline (auxiliary plate)
Handrail: Titanium gold stainless steel and solid wood
Car door: Etching titanium gold
Floor: PVC

DSK-K004

Ceiling: Hairline stainless steel, acrylic light-emitting panel
Car walls: Mirror, hairline finish, etching stainless steel
Handrail: Hairline stainless steel flat handrail
Car door: Hairline stainless steel
Floor: PVC

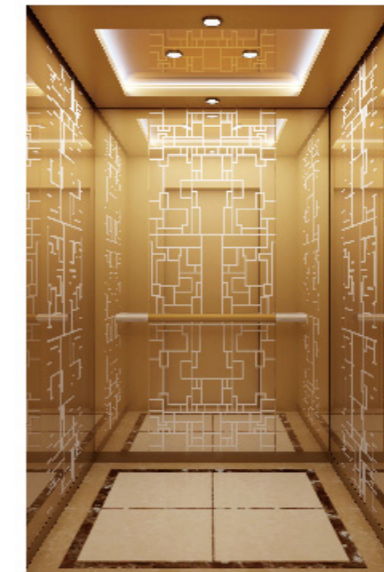
DSK-K005

Ceiling: Champagne mirror stainless steel frame, Combination of middle lamp belt lighting and etched stainless steel Champagne mirror
Car wall: A combination of Champagne stainless steel and Champagne mirror etching stainless steel
Car door: Champagne mirror stainless steel
Handrail: Champagne stainless steel round tube
Floor: PVC

DSK-K006

Ceiling: Black titanium mirror stainless steel frame, translucent acrylic panel, middle down LED light
Car wall: A combination of black titanium hairline stainless steel and black titanium mirror stainless steel
Car door: Black titanium hairline stainless steel
Handrail: Black titanium hairline stainless steel flat handrail
Floor: PVC

Optional car



DSK-K003



DSK-K004



DSK-K005



DSK-K006

PASSENGER CAR DECORATION

The excellent
performance of
unlimited scenery



Standard car



DSK-K002

Ceiling: Hairline stainless steel
(Integrated ceiling)
Car wall : Hairline stainless steel
Wheel: Embedded control box, panel
is hairline stainless steel
Car door: Hairline stainless steel
Floor:PVC

DSK-K010

Ceiling: Titanium stainless steel mirror,
LED lighting
Handrail: Titanium handrail
Floor: PVC

DSK-K011

Ceiling: champagne gold metal frame,
translucent acrylic panels LED lighting
design
Car wall: Hairline stainless steel
champagne gold and stainless steel
mirror combination champagne
Handrail: Hairline champagne round
handrail
Floor: PVC

DSK-K012

Ceiling: Stainless steel frame, LED
lighting both sides of the transparent
acrylic plate
Car wall: Mirror middle etched on
both sides of hairline stainless steel
Handrail: Stainless steel round
handrail
Floor: PVC

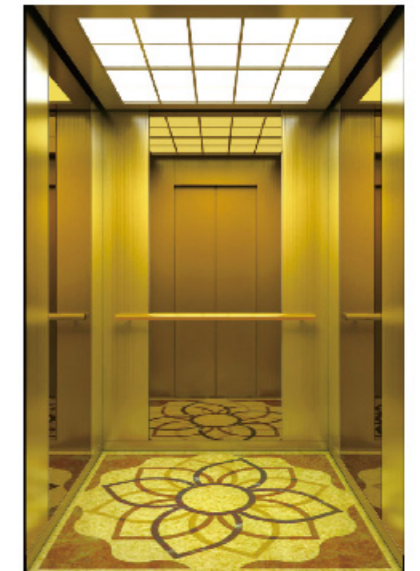
DSK-K013

Ceiling: Mirror stainless steel frame,
crystal lamp post,translucent acrylic
panels, LED lighting
Car wall: Hairline stainless steel
combination, mirror stainless steel
Handrail: Hairline stainless steel,
mirror etching
Floor: PVC

Optional car



DSK-K010



DSK-K011



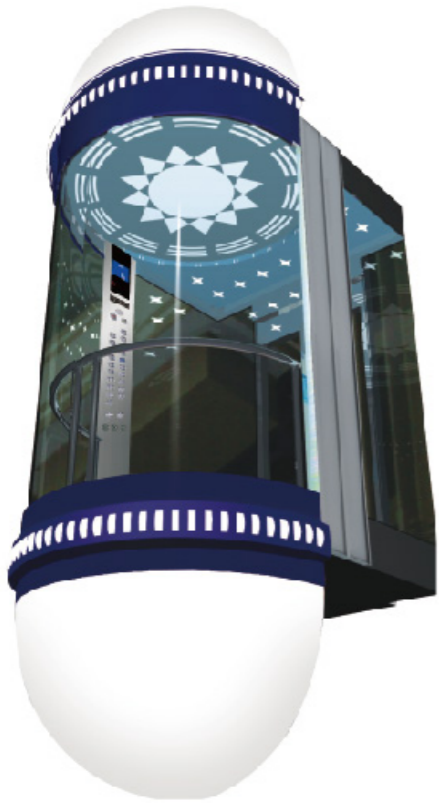
DSK-K012



DSK-K013

PANORAMA CAR DECORATION

The excellent
performance of
unlimited scenery



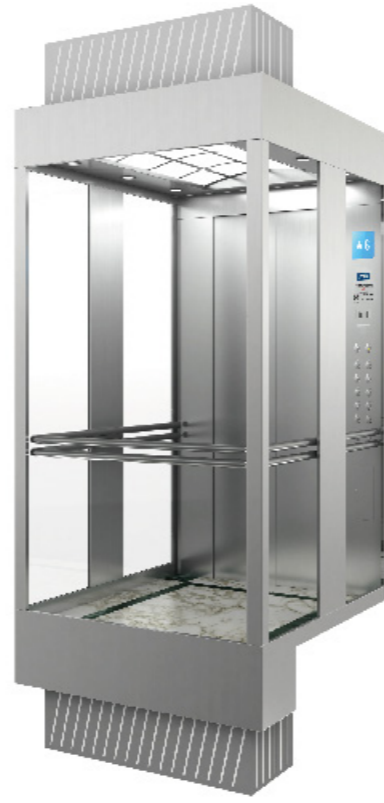
DSK-G001

Ceiling: Steel plate baking varnish, with curved coaming on top and bottom
Sightseeing wall: Laminated glass
Decoration roof: Steel plate baking varnish, acrylic decorative lighting
Car wall: Laminated glass
Handrail: Φ38 stainless steel pipe
Floor: PVC



DSK-G002

Ceiling: Round cutaway of steel plate baking varnish, beveled with LED light source
Sightseeing wall: Round 6 + 6 laminated safety glass (3 pieces)
Decoration roof: Steel plate baking varnish frame, mixed lighting of multi-level translucent panels and down lights.
Car wall: Hairline stainless steel
Handrails: Φ38 stainless steel pipe
Floor: PVC



DSK-G003

Outer hood: Hairline stainless steel, acrylic
Ceiling: Hairline stainless steel, acrylic decorative lighting
Observation wall: Glue glass of safety clamp
Car wall: Hairline stainless steel
Car door: Hairline stainless steel
Handrails: Stainless steel round tube
Floor: PVC



DSK-G004

Outer hood: titanium gold mirror stainless steel, acrylic
Ceiling: Mirror stainless steel framework, acrylic LED illumination
Observation wall: Glue glass of safety clamp
Car wall: Titanium gold mirror stainless steel
Car door: Titanium gold mirror stainless steel, Glass door with frame
Handrail: Titanium gold stainless steel round tube
Floor: PVC



DSK-G005

Housing: steel sheet and spray decorative lights, hairline stainless steel
Ceiling: Mirror stainless steel, acrylic LED lighting
Tourism wall: Laminated safety glass
Car wall: Hairline stainless steel
Handrail: Stainless steel tube
Floor: PVC

VILLA CAR DECORATION



DSK-J001



DSK-J002

DSK-J001 Standard

Ceiling: Hairline stainless steel frame,transparency,LED illumination
Rear wall: Hairline stainless steel and mirror stainless steel
Side walls: Hairline stainless steel
Control box: Mirror stainless steel(Integrated)
Floor: PVC

DSK-J002 Optional

Ceiling: Stainless steel frame(champaign gold),mirror etching(champaign gold), ceiling lamp, LED illumination
Rear wall: Etching Mirror stainless steel
Side walls: Champaign gold sandblasted stainless steel, Mirror stainless steel decorative bar
Control box : Mirror stainless steel(Integrated)
Handrail: Champaign gold stainless steel and solid wood
Floor: Marble



DSK-J003



DSK-J004

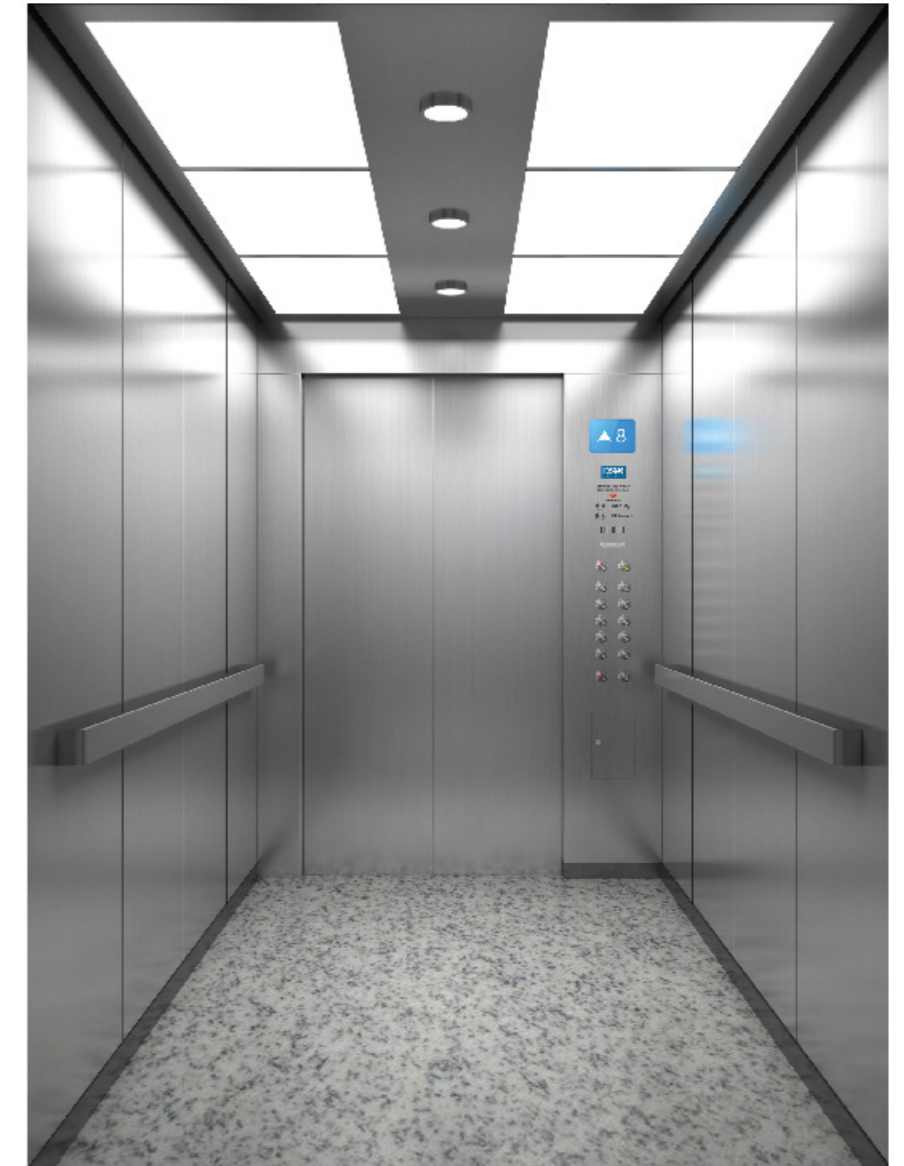
DSK-J003 Optional

Ceiling: Titanium gold mirror, LED illumination
Side walls and Rear wall: Titanium abrasive blasting stainless steel, combination of titanium and mirror stainless steel
Control box: Titanium gold mirror(Integrated)
Handrail: Titanium gold at two ends, stainless steel in the middle
Floor: Marble

DSK-J004 Optional

Ceiling: Mirror stainless steel, LED illumination
Observation wall: Glue glass of safety clamp
Car wall: Mirror stainless steel
Car door: Mirror stainless steel, Glass door with frame
Control box : Mirror stainless steel(Integrated)
Handrail: Stainless steel round handrail
Floor: marble

BED CAR DECORATION

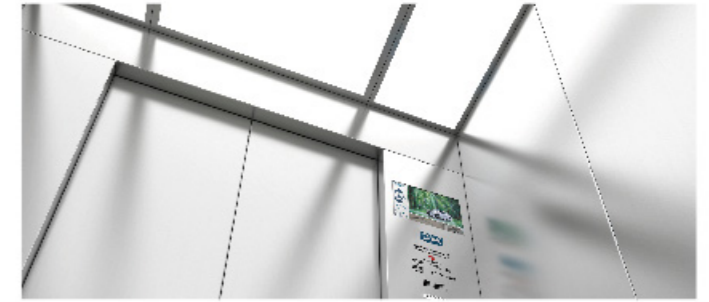


DSK-B001 Standard

Ceiling: Hairline stainless steel, Acrylic LED lighting
Car wall : Hairline stainless steel
Front wall: Hairline stainless steel
Wheel: Hairline stainless steel (Integrated control box)
Handrail: Hairline stainless steel short grain
Floor: PVC Wear-resistant flooring

DECORATION CONFIGURATION

Superior performance & individual decoration



Human interface



DSK-C001
Standard

DSK-C002
Optional

DSK-C003
Optional

Button Optional



DSK-A001

DSK-A002

DSK-A003

Display screen



Liquid crystal display
(Standard)

Pictures display
(Optional)

Multimedia display
(Optional)

Bottomless box call indicator



DSK-C001A

DSK-C001B

DSK-C002A

DSK-C002B

Floor display option



DSK-HX01

DSK-HX02

Ceiling series



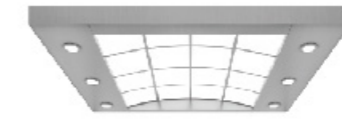
DSK-D001

Stainless steel hairline frame,
acrylic light-emitting panel



DSK-D002

Stainless steel frame acrylic arch,
LED lamps on both sides



DSK-D003

Hairlines stainless steel, acrylic lighting
decoration, LED lamps on both sides



DSK-D004

Hairlines stainless steel, acrylic lighting
decoration, LED lamps on both sides



DSK-D005

Stainless steel frame,
acrylic dome, acrylic lighting



DSK-D006

Mirror stainless steel frame, acrylic
light-emitting panel, middle LED lighting



DSK-D010

Mirror stainless steel frame,
combined with LED lighting



DSK-D011

Mirror stainless steel frame, translucent
acrylic panels, LED lighting



DSK-D012

Mirror stainless steel frame,
the middle hole, acrylic transparent
board, LED lighting



DSK-D013

Mirror stainless steel frame,
acrylic transparent board, LED lighting

DECORATION CONFIGURATION

Superior performance &
individual decoration



Landing door



DSK-T003



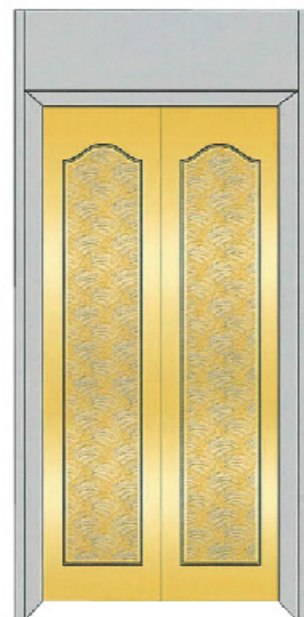
DSK-T004



DSK-T005



DSK-T006



DSK-T007



DSK-T008

Handrail



DSK-F001



DSK-F002



DSK-F003



DSK-F004



DSK-F005



DSK-F006

Optional panel material



Hairline stainless steel



Titanium stainless steel



Mirror stainless steel



Rose Gold stainless steel



Champagne stainless steel

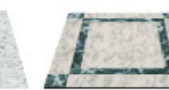
Floor



DSK-DB01



DSK-DB02



DSK-DB03



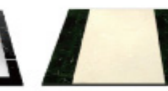
DSK-DB04



DSK-DB05



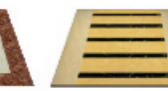
DSK-DB06



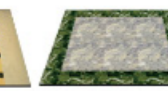
DSK-DB07



DSK-DB08

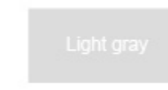


DSK-DB09



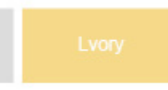
DSK-DB10

Color card series



Light gray

DSK-S001



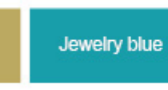
Ivory

DSK-S002



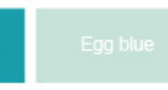
Milan yellow

DSK-S003



Jewelry blue

DSK-S004



Egg blue

DSK-S005

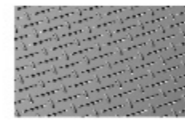
FREIGHT DECORATION

The solid
And durable lift car



DSK-H001
Standard
Ceiling: Paint steel
Car wall / Car door: Paint steel
Illumination: LED down lamp
Door opening mode: Side opening
Floor: Checkered plate
Sill: Galvanized steel plate

Standard floor

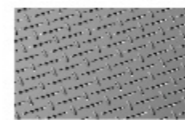


DSK-HDF01



DSK-H002
Standard
Ceiling: Hairline stainless steel
Car wall / Car door: Hairline stainless steel
Illumination: LED down lamp
Door opening mode: Center-opening & double-folded type
Floor: Checkered plate
Sill: Galvanized steel plate

Standard floor



DSK-HDF01

Operation panel



DSK-HC01
Standard

Landing door



DSK-HM01 Side opening



DSK-HM02 2-panels center opening



DSK-HM03
Center opening & double-folded type



DSK-HM04
Center opening & 3-folded type

CLASSIC PROJECT



Desenk elevator cooperates with Chongqing government To create two significant projects, starting new strategic brand journey

Changshou District government in Chongqing creates in emphasis first large scaled international urban synthesis-waterfront in Shoucheng, Huafu in new district, with unprecedented large scale, high specification and further influence; as upgrading project in national marketing strategy of Desenk, it cooperates with Chongqing government to create two major significant projects with common efforts, including providing DSK-K series of small machine room passenger elevator and DSK-F series for the project, realizing brand expansion radiating southwestern market, starting new journey of brand strategy covering important provinces and cities across the country.



Desenk elevator enters into investment building in Nanfeng First tall building in Fuzhou, entering in middle market

Desenk elevator leads superspeed elevator, being honored as top building in Fuzhou, entering into investment mansion in Nanfeng, providing DSK-K series small machine room passenger elevator and DSK-F series for the project. It has established further strategic partnership with government through several times of friendly cooperation; as landmark project in the region, it will greatly improve Desenk elevator's brand image in Jiangxi market, laying solid basis for expansion in middle market.



Tran boundary private customization made by Desenk elevator Assist with root carving cultural development industrial park in Changda, Zhejiang

Desenk elevator cooperates with root carving cultural development park to create significant project in Qingyuan County, Lishui, Zhejiang with billions of investment and private customization, providing for the project with DSK-K series small machine room passenger elevator. The project is manifestation of brand containment of elevator diversion and outstanding strength as well as important strategic arrangement of ecological civilization resources, providing infinite possibilities for diversity in marketing field.



Anhui Tongling Lixin Shanty Town

Huaihua Jiayuan Real Estate Development Company (eastern famous city) Project

Shandong Jining Sunshine Urban Park

CLASSIC PROJECT

Desenk elevator to add new projects Chongqing HengJu · MingSheng JiaYuan

The project made up of chongqing hengjuziye co., LTD. It's to become southwest milestone in the field of architecture. This cooperation, not only reveal the Desenk's elevator significantly superior in commercial integrated project, it has played a positive role for the southwest market.



FOREIGN PROJECT



Marz golden rose garden in Palestine



Sunshie Village in Mongolia



Kiambu shopping mall-Commercial Development in Kenya



Ainkhalid Mr Issa Project in Qatar



CENTECH SERVICE(U)LTD in Uganda



Kabbo Kash market in Bangladesh



HMODA elevator in Israel